
ANALYSIS CENTER

December 11, 2012

DigitalGlobe

North Korea's Camp No. 22 - update



THE COMMITTEE FOR
HUMAN RIGHTS IN NORTH KOREA
북한인권위원회

DIGITALGLOBE®

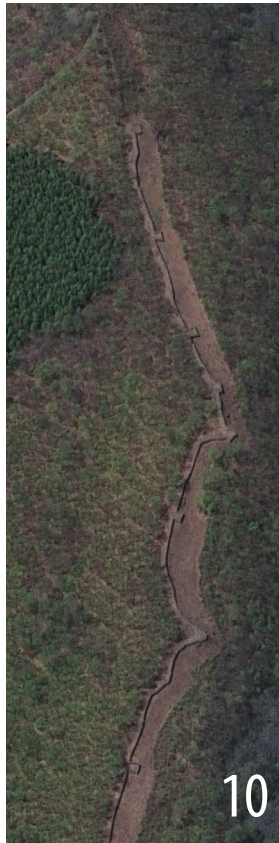
Contents



4



9



10



13



11

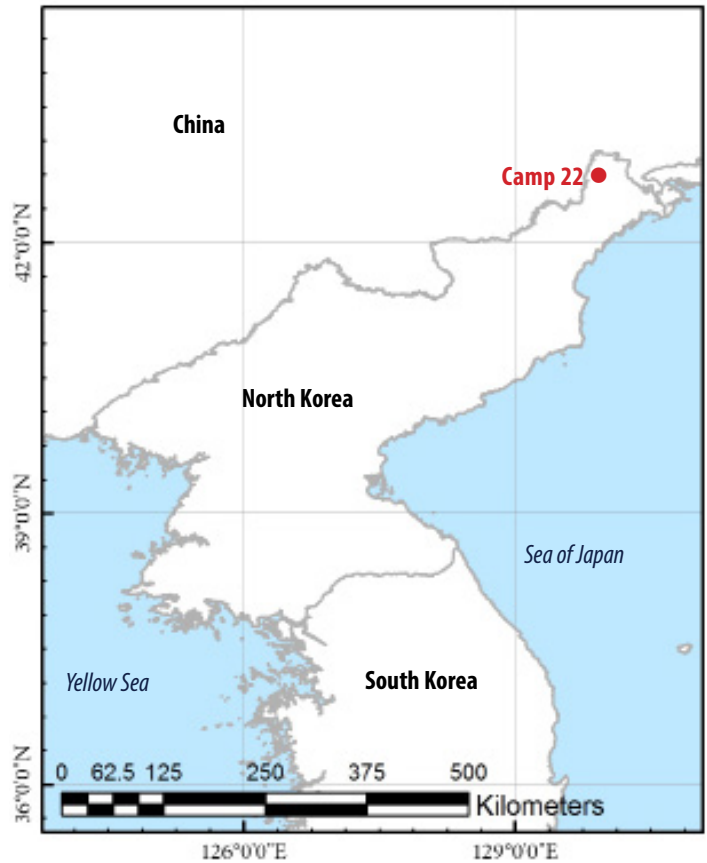
- Joseph S. Bermudez Jr., Senior Analyst
- Andy Dinville, Senior Imagery Analyst
- Katelyn Amen, Publishing Editor

Unless otherwise noted, all content in this report is copyrighted by DigitalGlobe.

Copyright © DigitalGlobe, Inc. 2010-2012

Questions or comments concerning this report can be sent to ww@digitalglobe.com.

On the cover: Foot bridge and guard post, May 2011.



3	Introduction
4	Large guard post
5	Guard post
6	Guard post with tower
7	Guard tower
8	Foot bridge and guard tower
9	Paths
10	Possible old walled fort
11	Mine tailings pile with pond
12	Mine tailings pile
13	Horizontal mine shaft
14	Small-scale mining
15	Active agricultural fields
16	Gazetteer

Introduction

As a follow-up to the October 2012 joint HRNK-DigitalGlobe imagery analysis of North Korea's Camp 22 (*Kwan-li-so* No. 22, Korean People's Security Guard Unit 2209), DigitalGlobe's Analysis Center was asked to assist in identifying reported activity in and around Camp 22 in Hamgyŏng-bukto. More specifically, the Analysis Center was to examine,¹

- The outer perimeter fence, guard towers and guard positions to determine if some, or all, have been razed. The razing of these structures could indicate that Camp 22 prisoners have been replaced with a non-prisoner workforce.²
- Mining-related activities in the Kungsim-dong and Kungsimjukp'o-dong areas. Undisclosed sources claim that mining operations in these areas have been shut down and the miners relocated to the Chungbong-dong (i.e., Camp 22) Mine, replacing the former prisoner workforce there.³
- Examine and assess Camp 16 (*Kwan-li-so* No. 16) to determine if there is evidence that the prison population has increased in the past year. Such indications could support reports that prisoners from Camp 22 were transferred to Camp 16.

Because of time and resource constraints, the Analysis Center can only address the first two items at this time. A future report will examine Camp 16.

Camp 22 Perimeter Fence and Guard Posts and Towers

Using imagery collected on May 21, 2011, October 7, 2012, and November 26, 2012, DigitalGlobe Analysis Center analysts examined the perimeter of Camp 22. The entire 75-kilometer perimeter is visible in the 2011 image; approximately 47 kilometers are visible using both 2012 images. Along this intersecting length, 46 probable guard posts and towers are identified. Of these, only 25 could be compared because of the limitations of sun angle, sensor angle, seasonality and vegetation. Analysis shows that a significant number of the smaller guard posts and towers have been either razed or abandoned. Additionally, the bridge at the entrance to the Chungbong-dong rail station has been removed. However, there is evidence of some activity (e.g., gardens and fields being tended, trails being used, etc.) at other guard posts and towers.⁴

Kungsim-dong

Using imagery collected on May 21, 2011, and October 7, 2012, analysts surveyed mining activity in the Kungsim-dong and Kungsimjukp'o-dong areas (approximately 13 kilometers southwest of Haengyŏng-ni and 2 kilometers

from the Camp 22 perimeter fence). Imagery shows a typical North Korean village in the mountains of Hamgyŏng-bukto. In the early 2000s, this area was a coal mining center with at least three large horizontal shaft mines served by a railroad branch line. By 2011, however, the large mines at Kungsim-dong had been inactive for years and the supporting rail branch line had been dismantled prior May 2011. In both 2011 and 2012 imagery, seven major tailings piles were identified. No new tailings piles were visible in the 2012 image, and there was essentially no change in the size of the tailings piles. Only small-scale mining activity is visible throughout the Kungsim-dong and Kungsimjukp'o-dong area during the past 15 months. This includes excavation of hillsides or shallow horizontal shafts, small pit excavation and scavenging of existing tailings piles. During this same period, there has been no infrastructure development in the area. The surrounding agricultural fields are well tended and have been harvested according to local practices.

Assessment

Although DigitalGlobe imagery of approximately half of the Camp 22 perimeter fence and associated guard posts and towers shows a significant number have been razed or abandoned, there is no evidence of the underlying motivations. Published reports suggest this is a result of Camp 22 being shut down, but this does not explain why some guard posts and towers still appear to be operational. Other plausible explanations include possible consolidations of the perimeter for financial or other practical reasons; an upcoming change in perimeter security operations (e.g., mobile patrols versus fixed positions); etc.

Imagery analysis does not confirm that the Kungsim mine has been recently closed and the miners moved to the Chungbong-dong mine. Rather, imagery analysis shows that the large mines in the Kungsim-dong and Kungsimjukp'o-dong areas have been inactive since before the period under examination (e.g., before May 2011). However, small-scale mining activities are visible throughout the area in all images examined, and the surrounding agricultural fields are well tended. This suggests that there has not been a large-scale change to neither population nor pattern of life.

Finally, it is important to reiterate the analytical caution presented in the original Camp 22 report. North Korean officials, especially those within the Korean People's Army and the internal security organizations, clearly understand the importance of implementing camouflage, concealment and deception (CCD) procedures. It would not be unreasonable for them to do so with activities concerning Camp 22.

Large guard post

From 2011 and 2012, no change is apparent at this large guard post on southwest corner of perimeter, 12.5 kilometers south-southwest of Chungbong-dong.



DigitalGlobe Natural Color Image, May 21, 2011, 42 28 18 N, 129 49 26 E



DigitalGlobe Natural Color Image, November 26, 2012, 42 28 18 N, 129 49 26 E

Guard post

No changes are apparent at the guard post on the east side of the camp's perimeter, 9 kilometers southeast of Chungbong-dong.



DigitalGlobe Natural Color Image, May 21, 2011, 42 32 01 N, 129 58 27 E



DigitalGlobe Natural Color Image, November 26, 2012, 42 32 01 N, 129 58 27 E

Guard post with tower

The guard post on the western perimeter visible in 2011 imagery is not present in 2012. It covers approximately 100 square meters, 7 kilometers southwest of Chungbong-dong.



DigitalGlobe Natural Color Image, May 21, 2011, 42 32 23 N, 129 48 44 E



DigitalGlobe Natural Color Image, November 26, 2012, 42 32 23 N, 129 48 44 E

Guard tower

The guard tower on the western perimeter visible in 2011 imagery is not present in 2012. It is located 11 kilometers southwest of Chungbong-dong.



DigitalGlobe Natural Color Image, May 21, 2011, 42 28 34 N, 129 49 20 E



DigitalGlobe Natural Color Image, November 26, 2012, 42 28 34 N, 129 49 20 E

Foot bridge and guard post

The foot bridge and guard post at the rail entrance appear to be missing in the 2012 image. It is 1.7 kilometers west of Chungbong-dong on the camp's western perimeter.



DigitalGlobe Natural Color Image, May 21, 2011, 42 34 51 N 129 51 55 E



DigitalGlobe Natural Color Image, October 26, 2012, 42 34 51 N 129 51 55 E

Paths

The paths between the camp's southern perimeter and nearby fields 13 kilometers south of Chungbong-dong are more distinct in the 2012 image because of snow.



DigitalGlobe Natural Color Image, May 21, 2011, 42 27 37 N, 129 53 11 E



DigitalGlobe Natural Color Image, November 26, 2012, 42 27 37 N, 129 53 11 E

Possible old walled fort

A possible old walled fort is inside the camp's southern perimeter, 13 kilometers south of Chungbong-dong.



DigitalGlobe Natural Color Image, May 21, 2011, 42 27 50 N, 129 53 59 E



DigitalGlobe Natural Color Image, November 26, 2012, 42 27 50 N, 129 53 59 E

Mine tailings pile with pond

In the 2011 image, the mine tailings pile in northwest Kungsim-dong has a perimeter of approximately 700 meters. In 2012, it is approximately 711 meters, indicating no apparent change.



DigitalGlobe Natural Color Image, May 21, 2011, 42 29 48 N, 129 47 24 E



DigitalGlobe Panchromatic Image, October 7, 2012, 42 29 48 N, 129 47 24 E

Mine tailings pile

There is no change in the mine tailings pile in northeast Kungsimjup'o-dong. In 2011, its perimeter is approximately 603 meters. In 2012, it is approximately 610 meters.



DigitalGlobe Natural Color Image, May 21, 2011, 42 30 09 N, 129 47 59 E



DigitalGlobe Panchromatic Image, October 7, 2012, 42 30 09 N, 129 47 59 E

Horizontal mine shaft

In Kungsim-dong, the horizontal mine shaft visible in 2011 is still present in 2012. The tailings pile's perimeter measures approximately 300 meters in 2011 and approximately 293 meters in 2012, indicating no significant change.



DigitalGlobe Natural Color Image, May 21, 2011, 42 29 28 N, 129 47 32 E



DigitalGlobe Panchromatic Image, October 7, 2012, 42 29 28 N, 129 47 32 E

Small-scale mining

Small-scale mining is visible throughout northwest Kungsim-dong.



DigitalGlobe Natural Color Image, May 21, 2011, 42 29 54 N, 129 47 01 E



DigitalGlobe Panchromatic Image, October 7, 2012, 42 29 54 N, 129 47 01 E

Active agricultural fields

High levels of agricultural production are visible in northwest Kungsim-dong. Although seasonal differences are evident between the two images, there is no significant change to agricultural patterns.



DigitalGlobe Natural Color Image, May 21, 2011, 42 30 06 N, 129 48 05 E



DigitalGlobe Panchromatic Image, October 7, 2012, 42 30 06 N, 129 48 05 E

Gazetteer

Chungbong-dong	42° 34' 36" N	129° 53' 05" E
Kungsim-dong	42° 29' 40" N	129° 47' 24" E
Kungsimjukp'o-dong	42° 30' 20" N	129° 48' 05" E

Endnotes

1. See: [http://hrnk.org/uploads/pdfs/HRNK%20CAMP%202022%20REPORT%20FINAL%20\(1\).pdf](http://hrnk.org/uploads/pdfs/HRNK%20CAMP%202022%20REPORT%20FINAL%20(1).pdf).
2. For example see: Sung Hui Moon, "From Prison Camp to Coal Hub," Radio Free Asia, November 6, 2012, <http://www.rfa.org/english/news/korea/camp-11062012112837.html?searchterm=camp%2022>
3. Ibid.
4. The remains of what appears to be an old fort, or fortified position, are visible along the southern Camp 22 perimeter. There has been no activity observed in this area during the examined period.

About the Analysis Center

DigitalGlobe's Analysis Center helps customers by focusing on what's most important—changes that directly impact their organizations. Our team of professional imagery, geospatial and open source research analysts are backed by direct access to the entire DigitalGlobe satellite imagery constellation, including the industry-leading ImageLibrary, which holds more than 2.9 billion square kilometers of sub-meter resolution imagery. The Analysis Center keeps a constant eye on the world to provide early insights into the business, market, military, environmental and political changes that impact people around the world.

DigitalGlobe Proprietary Notice

This document contains trade secrets and/or proprietary, commercial, or financial information not generally available to the public. It is considered privileged and proprietary to DigitalGlobe, Inc., to its subsidiaries, or to a third party to whom DigitalGlobe may have a legal obligation to protect such information from unauthorized disclosure. This document is submitted in confidence with the understanding that its contents are specifically exempted from disclosure, including the Freedom of Information Act [5 U.S.C. Section 552 (b) (4)] or any other Government, Commercial or Private act, shall not be disclosed by the recipient and shall not be duplicated, used, or disclosed, in whole or in part, for any purpose except to the extent in which portions of the information contained in this document are required to permit evaluation for its intended purpose. The information contained herein may not be disclosed to any other outside parties without the express written consent of DigitalGlobe. This restriction does not limit the right to use DigitalGlobe proprietary information if it is obtained from any other source without restriction. The data subject to this limitation is identified by the inclusion of a restriction notice on each page containing the limited data.

Indemnity

You will indemnify, defend, and hold harmless DigitalGlobe and its subsidiaries, affiliates and subcontractors, and their respective owners, officers, directors, employees and agents, from and against any and all direct or indirect claims, damages, losses, liabilities, expenses, and costs (including reasonable attorneys' fees) arising from or out of: (1) Your use of the Product for any purpose; (2) Your actual or alleged breach of any provision of this Agreement; or (3) damage to property or injury to or death of any person directly or indirectly caused by You. DigitalGlobe will provide You with notice of any such claim or allegation, and DigitalGlobe has the right to participate in the defense of any such claim at its expense.